

# Lucha-Ready Checklist



- ✓ **Step 1.**  
Review Key Election Dates in Texas
- ✓ **Step 2.**  
Register to Vote and/or Check Your Voter Registration Status
- ✓ **Step 3.**  
Find Your Nearest Polling Location and/or Apply for a Ballot by Mail
- ✓ **Step 4.**  
Find Our What/Who Is On Your Ballot This November
- ✓ **Step 5.**  
Create Your Official Plan to Vote
- ✓ **Step 6.**  
Help Your Friends Make Plans to Vote

## Welcome!

**About MOVE Texas**  
MOVE (Mobilize, Organizer, Voter Empower) Texas Civic Fund is a grassroots, nonpartisan, nonprofit organization building the power of young Texans through civic engagement, leadership development, and issue advocacy. Together we are building a Texas that believes in young people and centers their democratic participation.

**About This Voter Guide**  
This election may be your first time voting and you may need to know how to participate. Or it may not be your first election, but you still catch yourself wondering how to respond to rapidly changing and complicated laws around voting in Texas. Whatever the case, we want to make sure you have all the tools to successfully cast an informed ballot.



# VOTER GUIDE



Valemos más

For more info, visit our election center: [movetexas.org/vote](https://movetexas.org/vote)



## REVIEW THE IMPORTANT ELECTION DATES & DEADLINES

**Voter Registration Deadline**  
Monday, October 7th

**Early Voting Period**  
Monday, October 21st - Sunday, November 1st

**Mail-in Ballot Application Deadline**  
Friday, October 25th

**Deadline to Return Mail-in Ballot**  
Tuesday, November 5th

**Election Day**  
Tuesday, November 5th

### Provisional Voting

If you don't have the required ID to vote with you, you can still cast a provisional ballot. As a registered voter, you can't be turned away. If you forget your ID and can't return later, you can vote provisionally. To have your vote count, you'll have **six days** to present an acceptable photo ID to the county voter registrar or complete an affidavit for a declared natural disaster or religious objection to being photographed.



### Limited Voting

Missed the deadline to update your voter registration after moving? No worries! During early voting, you can request a limited ballot. Election workers will confirm your old registration, and you'll be able to vote on races that both your old and new counties share—think national and statewide, but probably not local ones. This option is only available during early voting.



### Vote early to avoid long lines and crowds.

### MOVE's Voting Tips

Check your registration before the deadline → [movetexas.org/vote](https://movetexas.org/vote)  
Be prepared when you head to the polls. Bring a mask, sanitizer, finger glove or pencil, and one of the accepted forms of ID:

- ★ Texas Driver's License
- ★ Texas Election ID Certificate
- ★ Texas Personal ID Card
- ★ Texas Handgun License
- ★ US Military ID Card containing the person's photograph
- ★ US Citizenship Certificate containing the person's photograph
- ★ Passport

### No I.D.? No Problem?

Note that the address on your I.D. does **NOT** have to match the address you're registered to vote in! Your I.D. may also expired no more than 4 years and still be considered valid. However, if you don't have any of the above options available, you can still execute a Reasonable Impediment Declaration and vote with one of the following forms of I.D.:

- ★ copy or original of a document that shows your address, including your voter registration certificate
- ★ copy of or original current utility bill
- ★ copy of or original bank statement
- ★ copy of original government check
- ★ copy of or original paycheck; or
- ★ copy of or original of a certified birth certificate which establishes the voter's identity



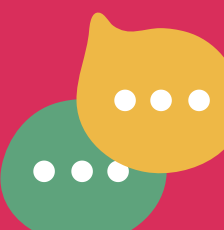
### Vote by Mail

If you meet any of the qualifications below, complete and sign an application to vote by mail. The County Clerk must receive your application via mail by October 25th.

- are 65 years or older;
- are sick or disabled;
- will be out of the county on election day and during the period for early voting by personal appearance; or
- expect to give birth within three weeks before or after Election Day; students, if you moved away to attend university or college in a different county, this means you!
- are confined in jail, but otherwise eligible.

### Curbside Voting

If you are physically unable to enter the polling place without personal assistance or likelihood of injuring your health or if you have symptoms of COVID-19, you can vote curbside, meaning that a poll worker must bring a ballot or voting machine out to you.



### Election Protection Hotlines

866-OUR-VOTE - English  
888-VE-Y-VOTA - Spanish  
888-API-VOTE - Asian Languages  
844-VALLA-US - Arabic  
301-818-VOTE - ASL/Video Call  
888-796-VOTE - Disability Rights Texas

